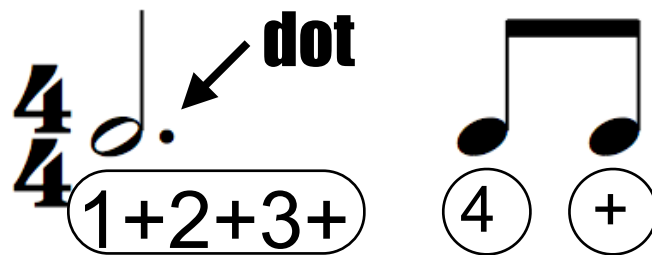


Level 2b- Apprentice

Dotted half notes, ties, pickups, and pickup measures

Dots

A dot added after a note or rest adds half of the original value to itself. It can be represented in an equation where V is the new value and N is the original value.



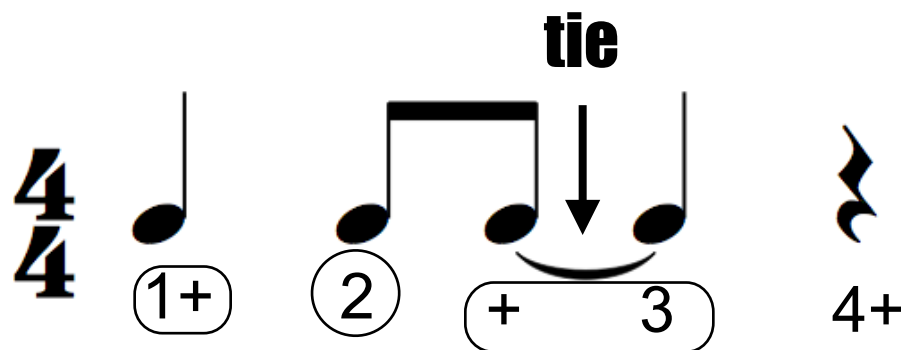
$$V = 1/2N + N$$

dotted half value

Here is a dotted half note. The original value of a half note is two counts. $V = 1/2n + n$
Half of two is one. one + two is three. A dotted half note gets three counts. $V = 1/2(2) + 2$
 $V = 1 + 2$
 $V = 3$

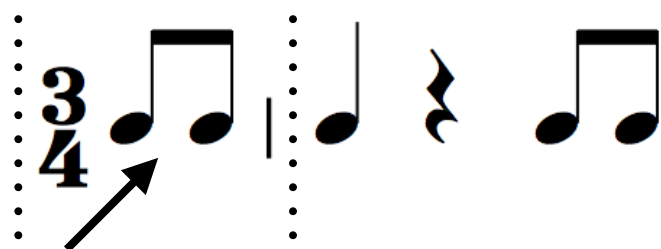
Ties

A tie adds two or more notes together. When notes are tied, they only have one attack. Tied notes should only have one circle when counts are written in. Rests cannot be tied.



Pickups and pickup measures

Not all music starts on beat one of a measure. Notes that appear in an incomplete measure at the beginning of a piece of music are called **pick up notes** or **pickups** and the incomplete measure is called the **pickup measure**. This can happen at the start of a phrase within a piece of music as well. The notes that come before beat 1 in a phrase are called the **pick up notes** or **pickups** as well.

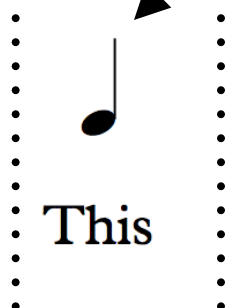


Pickup measure

Pickup notes or Pickups



phrase is done.



This



is the new phrase